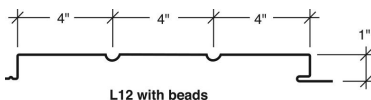
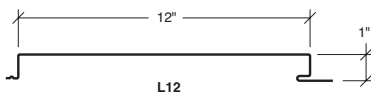
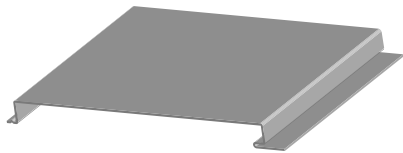


SOFFITS

ARTISAN®

The simplicity of the Artisan® panel is its best design feature. Uniform dimensions and a clean appearance allow the designer to plan modules, eliminate complicated pieces and follow wall curvatures. The Artisan® panel can be vertical, horizontal, perpendicular or skewed to the building line, allowing the designer to create with multidimensional freedom. Artisan® panels use the positive fastened method and are attached directly to the substructure. The fastener is concealed behind the flush face. Artisan® panels are used for soffits and interior liners. These panels can be attached to the MBCI LiteFrame® system, girts or a solid substructure and are available in two profiles, a flat profile and a profile with two beads.



PRODUCT SPECIFICATIONS

Applications: Soffit and Wall

Coverage Widths: 12"

Panel Attachment: Concealed Fastening System

Gauges: 24 (standard);
26, 22 (optional)

Finishes: Smooth (standard);
Embossed (optional)

Coatings: Galvalume Plus®,
Signature® 200, Signature® 300,
Signature® 300 Metallic

CATEGORY	CHARACTERISTIC	TEST METHOD	PURPOSE	RESULT
STRUCTURAL	Uplift Resistance	ASTM E 1592	Provides a standard procedure to evaluate or confirm structural performance under uniform static air pressure difference	See Load Chart Section
	Gravity Loads	AISI S100	North American Specification for the Design of Cold-Formed Steel Structural Members	See Section Properties and Allowable Load Table Section
WALL LISTINGS	Wall Performance - Texas Department of Insurance	ASTM E 1592	TWIA provides windstorm and hail insurance in areas exposed to hurricanes and currently provides windstorm and hail coverage in the following 14 "first tier" Texas coastal counties: Aransas, Brazoria, Calhoun, Cameron, Chambers, Galveston, Jefferson, Kenedy, Kleberg, Matagorda, Nueces, Refugio, San Patricio and Willacy.	See EC-98
	Wall Performance - Florida Approval	ASTM E1592	Florida product approval is the approval of products and systems, which comprise the building envelope and structural frame, for compliance with the structural requirements of the Florida Building Code.	See FL# 42378.1

Descriptions and specifications contained herein were in effect at the time this publication was approved for printing. In a continuing effort to refine and improve products, Fortify Building Solutions reserves the right to discontinue products at any time or change specifications and/or designs without incurring obligation. To ensure you have the latest information available, please inquire or visit our website at fortifybuildingsolutions.com. Application details are for illustration purposes only and may not be appropriate for all environmental conditions, building designs or panel profiles. Projects should be designed to conform to applicable building codes, regulations and accepted industry practices. If there is a conflict between this manual and project erection drawings, the erection drawings will take precedence.

© 2024 Fortify Building Solutions™, part of Cornerstone Building Brands, Inc. ALL RIGHTS RESERVED. 1502249991114/RevA/MS/0424